

Presented by the
UCSF SCHOOL OF MEDICINE and the UCSF SCHOOL OF NURSING

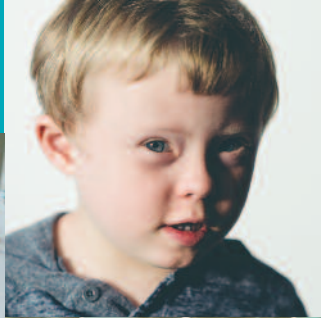
18th Annual

Developmental Disabilities: Update for Health Professionals

COURSE CO-CHAIRS

Lucy S. Crain, MD, MPH, FAAP

Geraldine Collins-Bride, MS, ANP, FAAN



UCSF

March 14-15, 2019

UCSF Laurel Heights Conference Center
San Francisco, California

This educational activity has been supported in part by a grant from WITH Foundation, a non profit 501(c)3 organization, and support from the California Department of Developmental Services and Golden Gate Regional Center

Photos courtesy of Support for Families, The Arc San Francisco, and Down Syndrome Connection of the Bay Area

18th Annual

Developmental Disabilities: Update for Health Professionals

Laurel Heights Conference Center • San Francisco, CA

The 18th annual interdisciplinary conference addresses a variety of topics, including the impact of trauma and immigration on child development and people with intellectual and developmental disabilities. Offering a unique update for primary care and subspecialty health care professionals and others who care for children, youth, and adults with developmental disabilities and complex health care needs, the 2019 conference covers a broad spectrum of developmental disabilities across the lifespan including autism spectrum disorders, mental health, genetic screening and diagnoses, and intervention and therapeutic consideration. Focus on special education, law enforcement, and policy from a variety of specialists adds to the content. We are pleased to present cutting edge talks on new advances in vision screening, developmental effects of perinatal marijuana and substance use, sleep disorders in people with Developmental Disabilities, dermatologic disorders in Down syndrome and other developmental disabilities, atypical seizure disorders, and intriguing therapeutic techniques and research overview for autism spectrum disorders.

Presentations by our expert faculty should be of interest to pediatricians, family physicians, nurse clinicians, psychologists, and internists who are involved in the health care of individuals with developmental disabilities, as well as to those in other health-related disciplines including health policy, epidemiology, psychiatry, school health, social work, and case management services. While the conference is designed for health care professionals, we welcome families and individuals with developmental disabilities who wish to learn from the various represented disciplines.

Non-profit conference exhibitors feature resources designed to help our audience better provide care for children, youth, and adults with developmental disabilities. We look forward to welcoming you to the 18th annual Developmental Disabilities Update Conference and hope that your patients and clients with special health care needs will benefit from your participation.

Lucy S. Crain, MD, MPH, FAAP and **Geraldine Collins-Bride, MS, ANP, FAAN**
Conference Co-Chairs

LEARNING OBJECTIVES

An attendee completing this course will be able to:

1. Discuss adverse events and proven impact of trauma and conflict/war/parental separation on development and potential for immediate and long term disability, and funding of services for immigrants with ID/DD and differences in eligibility for children and adults;
2. Identify educational and criminal justice resources;
3. Discuss current social and cultural disparities, and implications for healthcare access and quality of care for individuals with developmental disabilities;
4. Describe efforts and strategies to foster non-violent encounters with law enforcement and individuals who display acting out behaviors and mental health issues;
5. Provide informed healthcare for people with autism spectrum disorders and other behavioral disorders and develop strategies for appropriate referral;
6. Provide new information about sleep disorders in patients with DD/ID, and the current state of medical intervention;
7. Describe current interventions, educational programs, and co-morbidities associated with Down Syndrome, and apply appropriate treatment/referral strategies;
8. Identify and manage dermatologic conditions in Down syndrome and other developmental disabilities;
9. Counsel patients on new modalities for non-invasive vision screening;
10. Discuss new genetic diagnostic techniques and recognize syndromes associated with intellectual and developmental disabilities.

THURSDAY MARCH 14, 2019

7:15 am	<i>Registration and Continental Breakfast</i>	
7:50	Welcome and Course Overview	Lucy S. Crain, MD, MPH, FAAP Geraldine Collins-Bride, MS, ANP, FAAN Paul H. Wise, MD, MPH
8:00	Indirect Effects of War and Developmental Disabilities	
8:45	Immigration, Trauma, and Children & Youth with Disabilities	Fernando S. Mendoza, MD, MPH
9:30	Q & A	
9:40	<i>Coffee Break and Exhibits</i>	
10:00	Starting with Special Education	Jean C. Robertson
10:40	Moving Towards Positive Interactions with Law Enforcement	William Scott
11:20	Q & A	
11:30	Lessons Learned from the CART Services Mobile Consult Team	Geraldine Collins-Bride, MS, ANP, FAAN Clarissa Kripke, MD, FAAFP Eva C. Ihle, MD, PhD Zoe Collins, PsyD Patricia Mejia Jo Cummins
12:15 pm	<i>Lunch (Included in your registration)</i>	
1:15	Update on California's Intellectual and Developmental Disabilities Systems and Services	Nancy Bargmann, MS, MBA
1:45	Advances in Vision Screening	Maanasa Indaram, MD
2:15	The Evaluation and Diagnosis of Intellectual Disability: What You Need to Know	Cynthia Curry, MD
3:00	Q & A	
3:15	<i>Coffee Break and Exhibits</i>	
3:30	Pediatric Effects of Parental Substance Use	Diana Coffa, MD
4:00	Pharmacotherapy for Anxiety- and Stress-Related Behavior Dysregulation in Neurodevelopmental Disorders	Eva C. Ihle, MD, PhD
4:45	Q & A	
	ANNUAL SHRIVER LECTURE & AWARD	
5:00	Pomeroy Recreation & Rehabilitation Center: 67 Years of Service to the Community	David Dubinsky, CEO
5:30-6:30 pm	<i>Networking Reception</i>	

FRIDAY MARCH 15, 2019

7:15 am	<i>Continental Breakfast</i>	
7:50	Welcome and Daily Overview	Lucy S. Crain, MD, MPH, FAAP Geraldine Collins-Bride, MS, ANP, FAAN Noemi Alice Spinazzi, MD, FAAP
8:00	Charlie's Clinic - Holistic and Specialized Care for Children with Down Syndrome	
8:30	Skin Problems and Down Syndrome	Noemi Alice Spinazzi, MD, FAAP
9:00	Dermatologic Issues and Developmental Disabilities	Renee Howard, MD
9:30	Q & A	
9:45	<i>Coffee Break and Exhibits</i>	
10:00	Disordered Sleep in Children and Adults with DD: Diagnosis and Treatment Modalities	Rafael Pelayo, MD
10:45	Autism: Working with Sensory-Movement Differences	Clarissa Kripke, MD, FAAFP
11:30	Q & A	
11:45	<i>Lunch (On your own)</i>	
1:15 pm	Seize the Day! Atypical Seizure Disorders and DD	Joseph Sullivan, MD
1:45	The Top 10 Articles on Autism Spectrum Disorders in 2018-19	Robin L. Hansen, MD
2:15	Understanding Microcephaly: A 2019 Guide for Clinicians	Cynthia Curry, MD
2:45	Q & A	
3:00	<i>Coffee Break and Exhibits</i>	
3:15	Advances in Targeted Treatments in Fragile X Syndrome and Autism	Randi J. Hagerman, MD
4:00	WHAT'S NEXT? A Dialogue and Q&A with Afternoon Speakers	
4:30 pm	<i>Course Adjourns</i>	

CHAIRS

Lucy S. Crain, MD, MPH, FAAP
Professor of Pediatrics (Emerita)
UCSF School of Medicine
Adjunct Professor of Pediatrics
Stanford University

**Geraldine Collins Bride, MS,
ANP, FAAN**

Professor and Vice-Chair
Department of Community
Health Systems
UCSF School of Nursing

GUEST FACULTY

Nancy Bargmann, MS, MBA
Director, California Department
of Developmental Services
Sacramento, CA

Zoe Collins, PsyD
Licensed Psychologist
Oakland, CA

David Dubinsky
CEO, Pomeroy Recreation
and Rehabilitation Center
San Francisco, CA

Randi J. Hagerman, MD
Medical Director of the
MIND Institute
Distinguished Professor
Endowed Chair in
Fragile X Research
UC Davis Health System
Davis, CA

GUEST FACULTY (CONT'D)

Robin L. Hansen, MD
Director of Clinical Programs,
UC Davis MIND Institute;
Professor and Chief of
Developmental-Behavioral
Pediatrics, Department of Pediatrics,
School of Medicine
Director, Center for Excellence in
Developmental Disabilities (CEDD)
UC Davis Health System, Davis, CA

Fernando S. Mendoza, MD, MPH
Associate Dean of Minority
Advising and Programs,
Professor of Pediatrics, The Lucile
Salter Packard Children's Hospital
Stanford University, Stanford CA

Rafael Pelayo, MD
Professor of Psychiatry
and Sleep Medicine
Stanford University
Stanford, CA

Jean C. Robertson
Chief of Special Education Services
San Francisco Unified School
District, San Francisco, CA

William Scott
Chief of Police
San Francisco Police Department
San Francisco, CA

Paul H. Wise, MD, MPH
Richard E. Behrman Professor of
Child Health and Society,
Director, Center for Policy,
Outcomes and Prevention
Stanford University, Stanford, CA

UCSF FACULTY

Diana Coffa, MD
Associate Professor of Family and
Community Medicine

Jo Cummins
Program Coordinator
UCSF Office of Developmental
Primary Care

Cynthia Curry, MD
Professor of Pediatrics Emerita,
UCSF Adjunct Professor of Pediatrics,
Stanford Genetic Medicine –
University Pediatric Specialists
Fresno, California

Renee Howard, MD
Professor of Dermatology

Eva C. Ihle, MD, PhD
Health Sciences Associate Clinical
Professor, UCSF Departments of
Psychiatry and Pediatrics

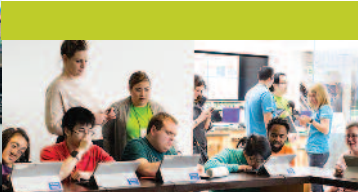
Maanasa Indaram, MD
Assistant Professor of Ophthalmology

Clarissa C. Kripke, MD, FAAFP
Professor of Family and
Community Medicine;
Director, Office of
Developmental Primary Care,
Department of Family and
Community Medicine

Patricia Mejia
Program Manager/Community Liaison
UCSF Office of Developmental
Primary Care

Noemi Alice Spinazzi, MD, FAAP
Physician, Primary Care
Medical Director, Charlie's Clinic
(Down Syndrome Clinic)
Co-Director, Developmental and
Behavioral Pediatrics rotation at BCHO
Assistant Clinical Professor, UCSF
School of Medicine

Joseph Sullivan, MD
Associate Professor of Neurology



ACCREDITATION

The University of California, San Francisco School of Medicine (UCSF) is accredited by the Accreditation Council for Continuing Medical Education to provide continuing medical education for physicians.

UCSF designates this live activity for a maximum of **14.25 AMA PRA Category 1 Credits™**. Physicians should claim only the credit commensurate with the extent of their participation in the activity.

This CME activity meets the requirements under California Assembly Bill 1195, continuing education and cultural and linguistic competency.

Family Physicians

Application for CME credit has been filed with the American Academy of Family Physicians.

Determination of credit is pending.

Nursing

For the purpose of recertification, the American Nurses Credentialing Center accepts **AMA PRA Category 1 Credit™** issued by organizations accredited by the ACCME.

Physician Assistants

AAPA accepts category 1 credit from AOACCME, Prescribed credit from AAFP, and **AMA PRA Category 1 Credit™** from organizations accredited by the ACCME.

Psychology

This educational activity is recognized by the California Board of Psychology as meeting the continuing education requirements toward license renewal for California psychologists. Psychologists are responsible for reporting their own attendance to the California Board of Psychology. Psychologists from other states should check with their respective licensing boards.

Licensed Clinical Social Workers and Marriage & Family Therapists

University of California, San Francisco School of Medicine (UCSF) is approved by the California Association of Marriage and Family Therapists to sponsor continuing education for LCSWs, LMFTs, LPCCs, and/or LEPs. UCSF maintains responsibility for this program/course and its content.

Course meets the qualifications for 14.25 hours of continuing education credit for LMFTs, LCSWs, LPCCs, and/or LEPs as required by the California Board of Behavioral Sciences.

Provider Name: UCSF Approval Number: 64239

No instructor or facilitator is permitted to promote or advocate for a single modality of treatment that is discriminatory or likely to harm clients, based upon current accepted standards of practice. All CAMFT-certified education must provide training on how to treat all clients in an ethically and clinically sound manner.



University of California
San Francisco

0569

Office of Continuing Medical Education
3333 California Street • Suite 450
San Francisco, CA 94118

REGISTER TODAY!

For early-bird registration, visit our website at cme.ucsf.edu or call (415) 476-5808. For information, cancellations, concerns, or grievances related to the course, contact the UCSF Office of Continuing Medical Education at info@ocme.ucsf.edu or call (415) 476-4251.

♻️ Printed on Recycled Paper

Photos courtesy of Support for Families, The Arc San Francisco, and Down Syndrome Connection of the Bay Area

GENERAL INFORMATION

Pre-registration is preferred to ensure that there are adequate course materials.

How to Enroll

- Tuition:** **\$450** Practicing Physicians
(\$550 if postmarked after 1/31/19)
- \$325** Nurses and other Health Professionals (\$400 after 1/31/19)
- \$100** Community Members
(no CE/CME credit)
- \$16** Optional Day Parking Voucher
at Laurel Heights Campus

* All registrants will receive a printed syllabus when they check in to the conference.

Payment can be made by Visa, MasterCard, AmEx or check.

Register via:

Online: **cme.ucsf.edu**

Mail: Complete course registration form and send with payment to:

UCSF Office of CME
P.O. Box 45368
San Francisco, CA 94145-0368

Fax: Fax completed registration form to:
(415) 502-1795 (be sure to include your credit card number)

Phone: To register by phone or to inquire about registration status, please call UCSF's CME Registration Office at (415) 476-5808

ON-SITE REGISTRATION

Generally we are able to accommodate on-site registration at our courses. Please check our website for up-to-date information on the course: cme.ucsf.edu

REFUND POLICY

Cancellations received in writing before the first day of the course will be refunded, less a \$75 administrative fee. No refunds will be made on cancellations received after that date.

ACCOMMODATIONS

UCSF has reserved a block of rooms at a discounted rate at **The Laurel Inn**, 444 Presidio Avenue (located across the street from the conference center) Conference Rate: **\$279** per night for a Presidio or City View Room.

Cut-off date: February 1, 2019 **or as soon as room block fills.**

Reservations: Telephone 800-552-8735 or 415-567-8467. When placing reservations by phone with the hotel, please mention that you will be attending the UCSF Developmental Disabilities Conference to receive the special rate.



REGISTRATION

18th Annual Developmental Disabilities: An Update for Health Professionals (MOC19001)

March 14-15, 2019 • UCSF Laurel Heights Conference Center • San Francisco, California

Mail to : UCSF Office of CME
P.O. Box 45368
San Francisco, CA 94145-0368
Fax: (415) 502-1795

Register online: cme.ucsf.edu
Registration Information: (415) 476-5808
Course Information: (415) 476-4251


Dr. Ms. Mr. Mrs. Mx.

Last Name	First	M.I.
Degree		Specialty
Address		
City	State	Zip
Daytime Phone	Fax	
Email		

Address Label Code Letter (see address label: example, A, B, C, D, etc.) _____

Would you like to be on our priority email list? Yes No

Date of birth to be used as OCME registrant number: ____ / ____ / **X X**
Month Day

 Please indicate if you have any special needs:

Registration Fees (Receipt/Confirmation will be mailed within two to four weeks):

- \$450** Practicing Physicians (**\$550** if postmarked after 1/31/19)
- \$325** Nurses and other Health Professionals (**\$400** after 1/31/19)
- \$100** Community Members (no CE/CME credit)
- \$16** March 14th Day Parking Voucher (optional)
- \$16** March 15th Day Parking Voucher (optional)

Make checks payable to *UC Regents*

Please charge my credit card: Visa MasterCard American Express for \$ _____

Card # _____ | _____ / _____ / _____
Expiration date

Name on Card (Please Print) _____ | _____
Authorized Signature

Refund Policy: Cancellations received in writing before the first day of the course will be refunded, less a \$75 administrative fee. No refunds will be made on cancellations received after that date.

Please check our website for up-to-date information on the course: cme.ucsf.edu

**UCSF Laurel Heights
Conference Center**
3333 California Street@Walnut
San Francisco, CA 94118

PARKING

Limited parking is available at the Laurel Heights Conference Center for \$16/day on Thursday/Friday. The conference center is located at 3333 California Street, between Presidio Avenue and Laurel Street and is accessible by public transportation (MUNI lines 1, 2, and 43).

